



**MOBILITYCARE**

*Since 1992*

Phone: (03) 9568 8383

39 Cambro Road, Clayton VIC 3168

[info@mobilitycare.net.au](mailto:info@mobilitycare.net.au)

[www.mobilitycare.net.au](http://www.mobilitycare.net.au)

EN

**2020**

**TOPRO PREMIUM WALKERS**

Taurus, Troja Walker, Troja Neuro



Made in Norway

**TOPRO**

# TAURUS

SAFE AND STEADY WALKER

The TOPRO Taurus offers optimal support for users with restricted mobility and is ideal for use in domestic and care environment.

## *New handles, brake levers and rear wheels on the Premium models!*

- It is **easily adjusted** to suit the particular ergonomic needs of the user – primarily height but also body size and arm position.
- Can be used as an aid for when getting out of bed or a chair.
- As an option (Premium models), **the handles can be adjusted** to the desired position.
- **Non-slip wheels** for easy and safe manoeuvring. All four wheels are equipped with foot brakes.
- The Premium models also have a **lockable position for the swivel of the rear wheels**, and all the wheels are fitted with locking brakes. Additionally, one can use a **handbrake** to determine the preferred personal pushing speed.
- The TOPRO Taurus is a versatile walking aid that can be personally adjusted to the individual user thanks to its hydraulic or electric height adjustment feature. **Adjustable forearm supports**, and a wide range of accessories make this the ideal walking aid.
- It is **also suitable for tall users** (up to 210 cm) and has a user weight limit of up to 150 kg.



New features, differences of the models, product details and measurements are available on the next pages and page 13.



Made in Norway



## DETAILS AND NEW FEATURES



Easy to operate adjustment of handles on the Premium models.



Driving and parking brake on the same lever on both handles on the Premium models.



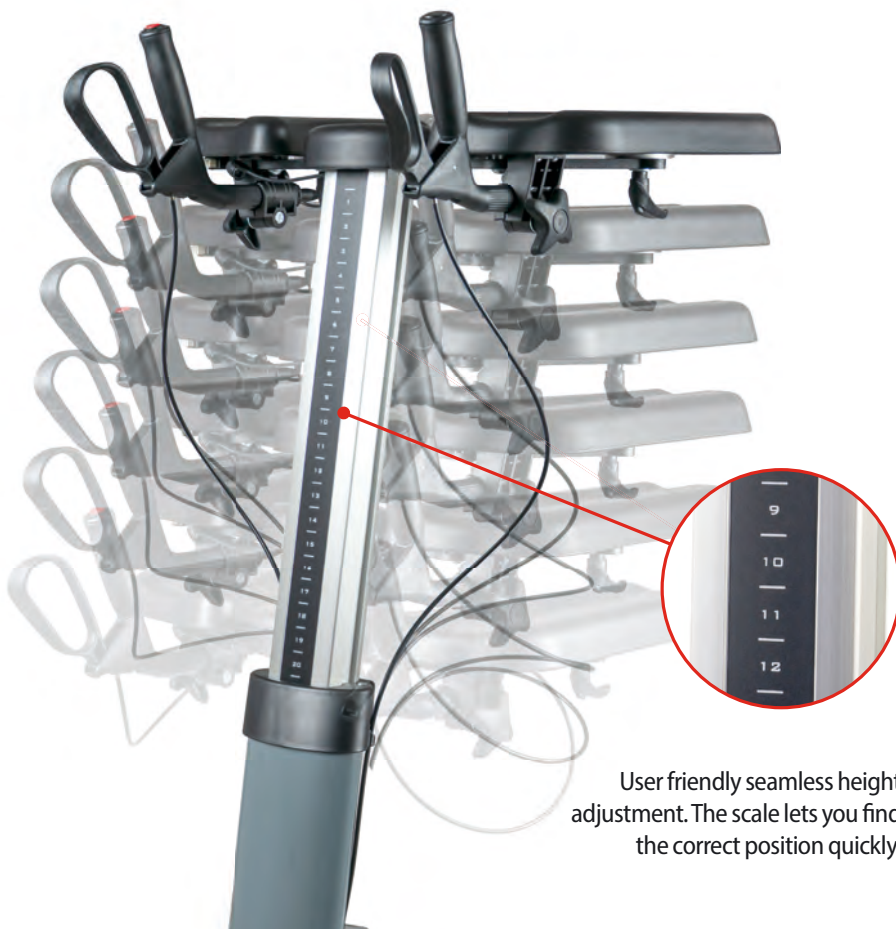
Toggle switch for electric height adjustment on the Taurus E.



Seamless adjustable forearm supports.



Integrated directional lock for the swivel (easily activated with the foot) on the Premium models. Foot brakes on all wheels and models.



User friendly seamless height adjustment. The scale lets you find the correct position quickly.

# MODEL SPECIFICATIONS

	TOPRO Taurus H Basic	TOPRO Taurus H Premium	TOPRO Taurus E Basic	TOPRO Taurus E Premium
<b>Driving and parking brake on both handles</b>	✗	✓	✗	✓
<b>Brakes can be operated independently from each handle</b>	✗	✓	✗	✓
<b>Adjustable handles</b> (Angle and length)	✗	✓	✗	✓
<b>Parking brakes on all wheels (foot brakes)</b>	✓	✓	✓	✓
<b>Adjustable forearm supports</b>	✓	✓	✓	✓
<b>Integrated directional lock on rear wheels</b> (Activate and release with foot pedal)	✗	✓	✗	✓
<b>Position symbols on the height adjustment button on the handle</b> -      O      = DOWN   NO ACTION   UP	✗	✗	✓	✓
<b>Electric height adjustment</b>	✗	✗	✓	✓
<b>Hydraulic height adjustment</b>	✓	✓	✗	✗
<b>Can be used in the shower</b>	✓	✓	✗	✗
<b>Could act as support while rising up due to easy operation from the handle</b> (Important: Is not a patient lifter)	✗	✗	✗	✓



H Basic



H Premium



E Basic



E Premium

## ACCESSORIES FOR TOPRO TAURUS



**Forearm side support (pair)**

Art. No. 814647

**Tray**  
for transporting food and drinks safely

Art. No. 814810



**Multifunction net basket**  
Extra place to put things for easy stowage  
of small items (up to 2 kg)

Art. No. 814821



**One-handed brake**

can be fitted on either side, for single-handed operation, e.g. after a stroke.

Art. No. 814026

**Infusion stand**

Art. No. 814793



**Stand for body fluid-boxes**

Art. No. 814034





### **Oxygen bottle holder**

Art. No. 814820



### **Foot plate**

for support to transport the user if they are tired

Art. No. 814645



### **Height adjustment panel** for TOPRO Taurus E

Art. No. 814646



### **Wall mount for the battery charger**

Art. No. 814085



Supported by the TOPRO Taurus, the user can get out of bed, a chair etc. without difficulty – with or without assistance.



Forearm support widths are easily adjustable to fit the user.

# TROJA WALKER

## LIGHTWEIGHT WALKER

The TOPRO Troja Walker is a practical, lightweight and stable walker with the comfort of a rollator with forearm supports which have been designed to provide upright support to ensure correct posture when walking.

- **Driving and parking brakes** are on the same lever, for easy operation.
- Innovative **sideways folding technology** that is easy to operate with one hand by pulling the cord on the seat. This makes the walker **practical to transport** and enables it to **stay firmly on its wheels** and take up little space when stored.
- The handle bars can be pushed down into the side bars for practical storage.
- Unique **memory function** keeps the pre-set forearm support height for easy use.
- **Ball bearings in forks and wheels** provide excellent driving comfort and manoeuvrability.
- **Edge guard and tilt function** for safe and easy manoeuvring over thresholds.
- **Practical net basket** for easy access to items. Holds up to 5 kg.
- Available in three different sizes.

Measurements, colour options and other product details are available on page 14.



Made in Norway







# TROJA NEURO

THE ROLL CONTROL SPECIALIST

The TOPRO Troja Neuro features a reverse braking system which has been specially developed to provide users with extra safety with roll control. The brakes are automatically activated until the brake handles are pushed in.

- Based on the tried-and-tested TOPRO Troja Classic rollator and **fitted with a reverse braking system (RBS)**.
- **RBS** automatically stops the rollator, without having to use the brake levers.
- **Cannot roll away by accident**, but has to be actively “started” in order to move. The **brakes handles must be held in** to operate the rollator.
- **RBS can make coordination easier** for people with neurological disorders or age-related changes in gait, increases their safety and provides them with greater stability when sitting on the rollator.
- **User friendly brake operation**, which are usually well accepted even by people with memory problems, making a significant contribution to preventing falls.
- Safer to sit down and stand up with the **brakes automatically turned on**.
- **Possible to deactivate the brakes completely** by pushing the brake handles all

the way down to the locked position. The rollator can then move freely.

- **Ergonomic handles** for flexible grip, correct walking posture and comfortable armrests (**TOPRO Ergo Grip**). Changing the grip relieves pressure on the hands.
- Unique **memory function** maintains the preset forearm support height for easy use.
- **Small turning circle** makes it easy to use in small rooms (e.g. bathrooms/kitchen).
- **Edge guard** and **tilt function** for safe and easy manoeuvring over thresholds and kerbs.
- Detachable spacious basket.
- **Easy to fold**, by simply pulling the cord on the seat. Stays firmly on its wheels and takes up little space when stored and transported.

Measurements, colour options and other product details are available on page 15.



Made in Norway



## TOPRO ROLL RESISTANCE SYSTEM (RRS)

The TOPRO Troja Neuro can be fitted with our special TOPRO Roll Resistance System (RRS) as an optional extra.

This is fitted above or below the edge deflector on the wheel and is seamless adjustable using the small dial. This enables the rollator's resistance to be individually adapted to the needs of the user – so that the user always has the optimum resistance to be able to walk safely and evenly.



Roll Resistance System (RRS) installed beneath the edge guard.



The edge guard and the Reverse Braking System (RBS) make everyday life easier. Permanently braked; pull to walk/release to stop.



**Roll resistance system (RRS)**  
for Troja Neuro. To adapt the roll  
resistance when walking with the rollator

Art. No. 814038

# ACCESSORIES FOR TOPRO TROJA WALKER AND NEURO



TN  
TW

## Crutch holder

can be fitted on either side

Troja Walker/Neuro Art. No. 814025



TN  
TW

## One-handed brake

can be fitted on either side for one-handed operation of simultaneous braking.

Art. No. 814026

## Further accessories:

Back support, umbrella with attachment, shopping bag (TN), lock, name tag, roll resistance system, rear bag, LED lamp (TN), stabilizer bar (TW).

**Tray**  
snaps in securely, easy to remove and clean, carries up to 5 kg

Art. No. 814728



TN  
TW

**Anti-slip mat**  
to safely transport your cups, plates, etc. on the tray

Art. No. 814059



TN  
TW

**Guiding handle**  
for companion

Art. No. 814014



TN  
TW

**Net basket for oxygen bottle**  
suitable for bottles with 2 litres of oxygen (only compressed, not liquid). Holds up to 5 kg.

Art. No. 814009



TN  
TW

# TECHNICAL DATA FOR TOPRO TAURUS

Type	H (hydraulic spring)	E (electric)
<b>Recommended user height</b>	140–210 cm	140–210 cm
<b>Max. user weight</b>	150 kg	150 kg
<b>Height of forearm support points</b>	86.5–132 cm	86.5–136 cm
<b>Width between support points</b>	34–47 cm	34–47 cm
<b>Length of forearm supports</b>	34 cm	34 cm
<b>Handles</b>	Round, Ø 3.5 cm	
<b>Turning circle</b>	91 cm	91 cm
<b>Diameter wheels</b>	12.5 cm	12.5 cm
<b>Width wheels</b>	3.1 cm	3.1 cm
<b>Width at front, inside dimension</b>	48 cm	48 cm
<b>Width at front, outside dimension</b>	57 cm	57 cm
<b>Width at rear, inside dimension</b>	57 cm	57 cm
<b>Width at rear, outside dimension</b>	66 cm	66 cm
<b>Product weight</b>	18 kg	22 kg
<b>Area of use</b>	Indoors	

Model	Art. No.
<b>TOPRO Taurus H Basic</b> (130 N hydraulic spring)	814785
<b>TOPRO Taurus H Premium</b> (130 N hydraulic spring) Incl. adjustable handles, driving and parking brake on handles, lock for swivel.	814787
<b>TOPRO Taurus E Basic</b> (electric)	814790
<b>TOPRO Taurus E Premium</b> (electric) Incl. adjustable handles, driving and parking brake on handles, lock for swivel.	814789

2-year warranty, excluding assembly and wear and tear parts.

# TECHNICAL DATA FOR TOPRO TROJA WALKER

Size	M (medium)	S (small)	X (extra small)
<b>Recommended user height</b>	150–185 cm	130–170 cm	130–160 cm
<b>Max. user weight</b>	135 kg	125 kg	80 kg
<b>Max. capacity basket</b>	5 kg / 20 l	5 kg / 20 l	5 kg / 11 l
<b>Height of forearm support points</b>	98–117 cm	84–100 cm	84–96 cm
<b>Handles</b>	Round, Ø 3.5 cm	Round, Ø 3.5 cm	Round, Ø 3.5 cm
<b>Maximum length</b>	65 cm	65 cm	65 cm
<b>Maximum width</b>	63 cm	63 cm	53 cm
<b>Seat height</b>	62 cm	54 cm	50 cm
<b>Turning circle</b>	84 cm	84 cm	79 cm
<b>Diameter wheels</b>	20 cm	20 cm	20 cm
<b>Width wheels</b>	3.6 cm	3.6 cm	3.6 cm
<b>Grip distance driving brake</b>	7.4 cm	7.4 cm	7.4 cm
<b>Height when folded</b>	102 cm	88 cm	88 cm
<b>Width when folded</b>	33 cm	33 cm	33 cm
<b>Length when folded</b>	65 cm	65 cm	65 cm
<b>Total dimensions (l × w × h)</b>	65 × 33 × 102 cm	65 × 33 × 88 cm	65 × 33 × 88 cm
<b>Product weight</b>	8.8 kg	8.5 kg	8.2 kg
<b>Area of use</b>		Indoors	
<b>Art. No.</b>	814749	814742	814741



**Model M available in:**



Dark grey

**Model S and X available in:**



Silver

# TECHNICAL DATA FOR TOPRO TROJA NEURO

Size	M (medium)	S (small)
<b>Recommended user height</b>	150–200 cm	135–170 cm
<b>Max. user weight</b>	150 kg	125 kg
<b>Max. capacity basket</b>	10 kg / 16 l	10 kg / 16 l
<b>Handle height</b>	78–100 cm	71–86 cm
<b>Handles</b>	Ergonomic, several holding positions (TOPRO Ergo Grip)	
<b>Maximum length</b>	65 cm	65 cm
<b>Maximum width</b>	60 cm	60 cm
<b>Width between handles</b>	47 cm	47 cm
<b>Seat height</b>	62 cm	54 cm
<b>Turning circle</b>	84 cm	84 cm
<b>Diameter wheels</b>	20 cm	20 cm
<b>Width wheels</b>	3.6 cm	3.6 cm
<b>Grip distance driving brake</b>	7 cm	7 cm
<b>Height when folded</b>	80 cm	74 cm
<b>Width when folded</b>	24 cm	24 cm
<b>Length when folded</b>	65 cm	65 cm
<b>Total dimensions (l × w × h)</b>	65 × 24 × 80 cm	65 × 24 × 74 cm
<b>Product weight</b>	7.8 kg	7.4 kg
<b>Area of use</b>	Indoors & outdoors	
<b>Art. No.</b>	814746	814747

**Model M available in:**



Dark grey

**Model S available in:**



Silver



## Premium products from Norway

### Manufacturer:



TOPRO Industri AS

### Postal address:

P.O. Box 428  
NO-2803 Gjøvik

### Registered office:

Rambekkvegen 5  
2816 Gjøvik  
Norway

Tel. (+47) 61 13 46 00  
info@topromobility.com  
www.topromobility.com



**Made in Norway**

- Norwegian design and made in Norway.
- TOPRO vouches for top quality and offers a 7-year warranty for the TOPRO Troja models and 2-year warranty for the TOPRO Taurus models (excl. assembly and wear and tear parts.)

### Quality Assurance Standards

EN ISO 9001 – quality  
EN ISO 14001 – environment  
EN ISO 11199-2 – rollator  
EN ISO 11199-3 – walker  
EN ISO 10993-5 – biocompatibility

All illustrations, dimensions and information: errors and omissions excepted Tolerances, colour variations and innovations in the context of technical implementation cannot be excluded.