



back to sleep[®]
mattress & pillow specialists



MEDICAL MATTRESS CATALOGUE

MADE IN AUSTRALIA

CONTENTS

3 HIGH - VERY HIGH RISK

High to Very High Risk Pressure Care Mattress

04 ZEPHAIR

08 ALAISE

11 HIGH RISK

High Risk Pressure Care Mattress

12 SOVEREIGN S7

14 SOVEREIGN S6

17 MEDIUM RISK

SOVEREIGN Pressure Care Mattresses

18 ICON MAXX

20 HOMECARE ICON SOFT

21 HOMECARE ICON MEDIUM

22 HOMECARE ICON FIRM

25 MATTRESS COVERS

26 PREMIFLEX ULTRA

27 ADVANTIFLEX CLASSIC

28 LUXURY QUILTED HOMECARE

29 COVER OPTIONS

32 CONTACT DETAILS

VERY HIGH RISK

MATTRESSES SYSTEM

The Forté Zephyr Gentle Critical Care Air mattress system provides true leadership when patient care demands unprecedented comfort alongside outstanding care. Tried and trusted by facilities and homecare alike, the Zephyr provides Gentle Critical Care, Pressure Injury Prevention, Pain Management, Comfort & Compliance, Stability and Safety and mitigation of Falls Risk. By optimising patient function, and reducing risk of pain and injury, the Zephyr increases dignity, independence and cognitive welfare for vulnerable patients.



ZEPHAIR

Gentle Critical Care Air Mattress System

Unique powered hybrid air mattress system offering unparalleled pain management and patient compliance alongside a high level of pressure care and functional support.



SPECIFICATIONS

| Code | Dimensions (L x W x D mm) | Size | Product Ratings | |
|--------------------------|------------------------------|---|---|----------------------|
| ZAS1000 | 1980x880x215 | Single | Shear & Friction | 0 ——— 5 |
| ZASL1000 | 2030x880x215 | Single, Long | | 0 ——— 5 |
| ZAKS1000 | 1980x1050x215 | King Single | Repositioning | 0 ——— 5 |
| ZAKSL1000 | 2030x1050x215 | King Single, Long | | 0 ——— 5 |
| ZAEW1000 | 1980x1150x215 | Extra-Wide | Infection Control | 0 ——— 5 |
| ZAEWL1000 | 2030x1150x215 | Extra-Wide, Long | | 0 ——— 5 |
| ZAD1000 | 1980x1350x215 | Double | Firmness | 0 ——— 5 |
| ZADL1000 | 2030x1350x215 | Double, Long | | 0 ——— 5 |
| ZAQ1000 | 1980x1530x215 | Queen | Moisture & Microclimate | 0 ——— 5 |
| ZAQL1000 | 2030x1530x215 | Queen, Long | | 0 ——— 5 |
| ZAK1000 | 1980x1850x215 | King | Performance & Longevity | 0 ——— 5 |
| ZAKL1000 | 2030x1850x215 | King, Long | | 0 ——— 5 |
| - | Customise | To suit any bed platform | Mobility & Function | 0 ——— 5 |
| Cover | | Warranty | | Pressure Care Rating |
| Premiflex Ultra | | 5 Year Foam / 4 Year Cover 2 Year Air Cell / 1 Year Pump | | |
| Therapeutic Weight Range | | | Applications | |
| 30 - 180kg | | | » Hospital Wards » Aged Care » Palliative Care » Homecare | |

FOAM CORE FEATURES



PATIENT INTERFACE - UPPER LAYER

- » Airoform Response Immersion Interface
- » High open-cell elasticity for patient immersion
- » Anti-microbial treatment applied to foam maximises longevity and core micro-climate
- » Conforms to EPUAP, NPUAP & PPIA Guidelines for quality and comfort.



PATIENT INTERFACE - LOWER LAYER

- » Airoform Memory Breathe Immersion Layer
- » High Temperature Stability to deliver consistent immersion, performance and comfort
- » Maximises Patient contact with Support Surfaces Providing Pressure Redistribution
- » Alleviates localised pressure points
- » Depth calibrated to maximise functionality and patient mobility
- » Prevents collapse, tearing and side-ways twisting of second layer to ensure patient receives full immersion benefit
- » Increases lateral shear relief by connecting cells within second layer together
- » Unique Airoform Breathe ventilation system minimises heat entrapment and enhances core circulation providing a cooler sleep surface
- » Visco-elastic/Memory Foam cell structure provides low-shear surface
- » Firmness: Soft



PREMIUM FIRM FOUNDATION LAYER

- » Provides protection against 'bottoming-out' during transfer, repositioning and whilst in the inclined/fowler position
- » Provides exceptional comfort, support for repositioning and patient care
- » Provides protection to air system from bed base
- » Provides patient protection should a prolonged power outage occur.



22 CELL, ALTERNATING AIR SYSTEM

- » 125mm depth facilitates immersion
- » Ultra-flexible, soft-touch material
- » 22 cell system. Narrow cell design minimises patient disturbance yet provides full air system
- » Available in Single or King Single Width. Wider sizes are manufactured with pressure care & comfort infill panel / mattress.



EASY TO ACCESS CPR

- » Positioned on air supply tubes
- » Access is not impeded by bed linen or side rails.



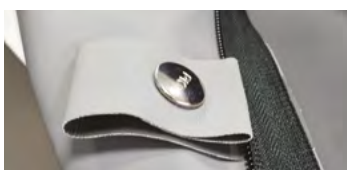
MODULAR DESIGN

- » Every component is modular and replaceable for low ongoing operational costs
- » 360° access zipper for ease of maintenance.



SILENT ERGONOMIC PUMP

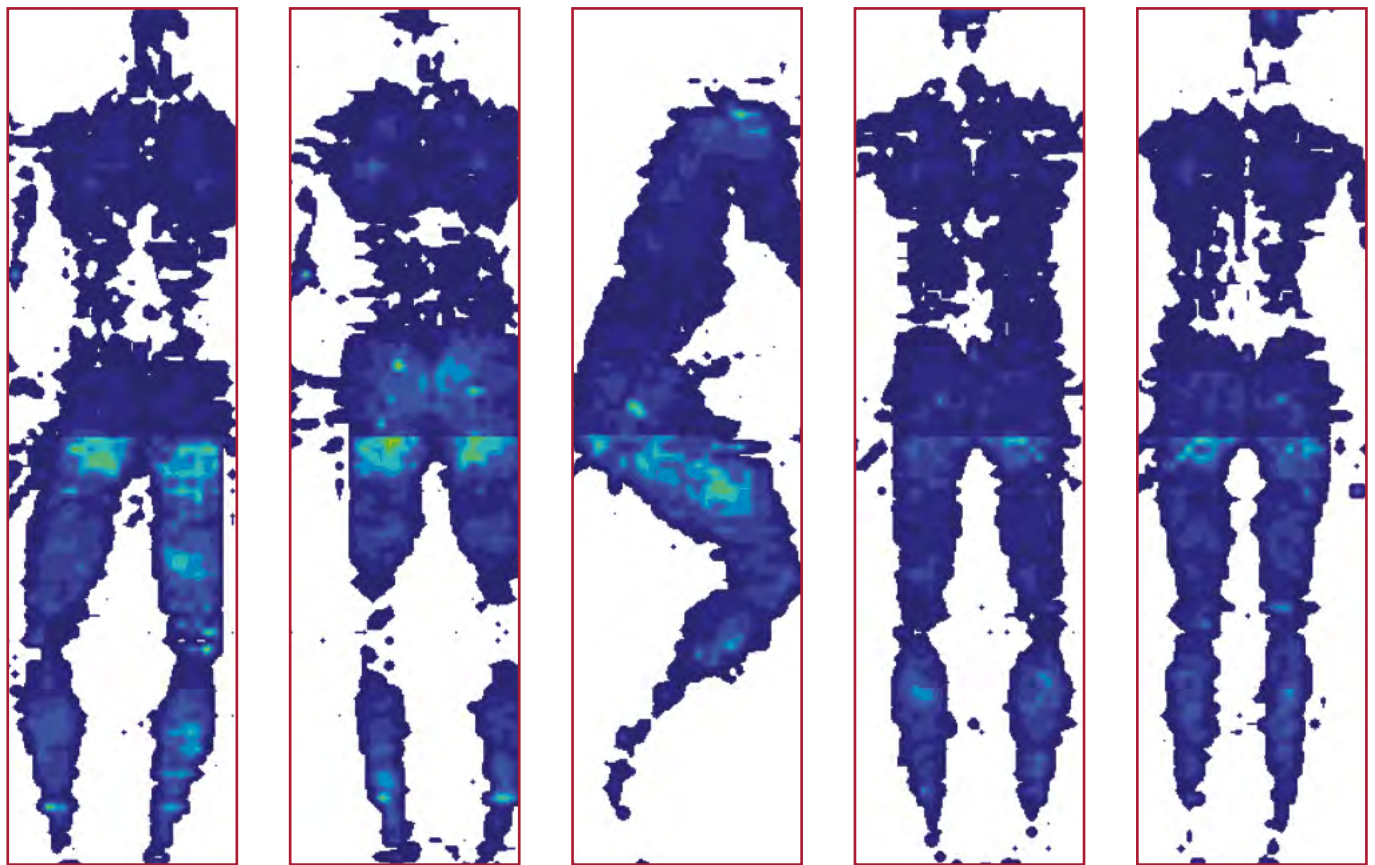
- » Silent operation minimising patient disturbance
- » Intuitive, simple operation
- » One-touch quick-change air filter for ease of maintenance
- » Mounts to wide variety of beds
- » Quality componentry
- » Full after-sales backup and support
- » Low pressure indication & power failure alert.



POWER CORD SAFETY RETENTION SYSTEM

- » Integrated loops enable the power cord to be fastened to the side of the mattress
- » Prevents trip hazards and power cord entrapment by adjustable bed surface
- » Press-stud closure allows easy fitment

CLINICAL PRESSURE MAPPING



FOWLER
Elevated Legs

FOWLER

LATERAL
RECUMBENT

SUPINE
Elevated Legs

SUPINE



TEKSCAN PRESSURE MEASUREMENT

| | | | |
|--------------------|-----------|-------------------------------------|-----------------|
| System: 7.20C | Rows: 104 | Sensel Area: 2.89008cm ² | Micro Second: 0 |
| Sensor Type: 5400D | Cols: 34 | Seconds per Frame: 0.010319 | Units: mmHg |

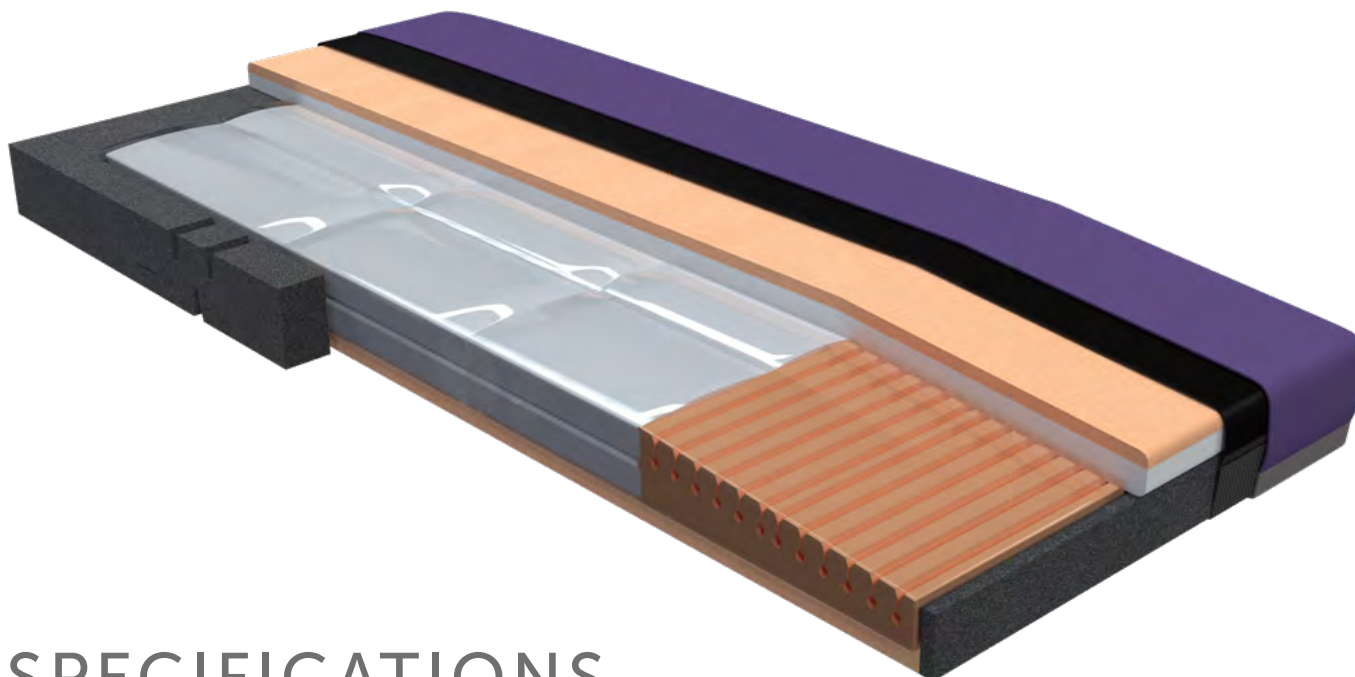
PRESSURE MAPPING PARAMETERS

| | | |
|--|---------------------|---------------------------|
| Bed Surface: Icare Medical King Single | Subject: 98kg, Male | Height: 188cm |
| Duration: Pressure Mapping was captured after 6 hours of subject laying upon support surface | | Ambient Temperature: 21°C |

ALAISE

The Revolution In Pumpless Air

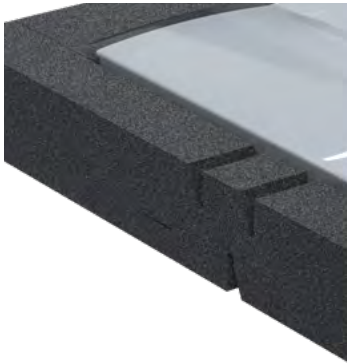
“The Forté Alaise truly allows for exceptional pressure redistribution, without compromising on stability or function. A seamless and practical combination of air and foam technology ensures maximum comfort and care across all environments.”



SPECIFICATIONS

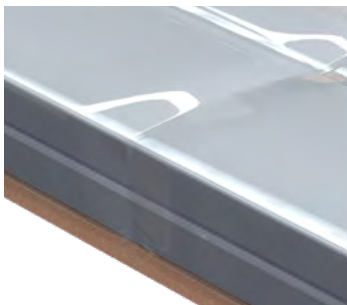
| Code | Dimensions (L x W x D mm) | Size | Product Ratings | |
|-----------------------------------|------------------------------|---|---|----------------------|
| ALS1000 | 1980x880x185 | Single | Shear & Friction | 0 ——— 5 |
| ALSL1000 | 2030x880x185 | Single, Long | | 0 ——— 5 |
| ALKS1000 | 1980x1050x185 | King Single | Repositioning | 0 ——— 5 |
| ALKSL1000 | 2030x1050x185 | King Single, Long | | 0 ——— 5 |
| ALEW1000 | 1980x1150x185 | Extra-Wide | Infection Control | 0 ——— 5 |
| ALEWL1000 | 2030x1150x185 | Extra-Wide, Long | | 0 ——— 5 |
| ALD1000 | 1980x1350x185 | Double | Firmness | 0 ——— 5 |
| ALDL1000 | 2030x1350x185 | Double, Long | | 0 ——— 5 |
| ALQ1000 | 1980x1530x185 | Queen | Moisture & Microclimate | 0 ——— 5 |
| ALQL1000 | 2030x1530x185 | Queen, Long | | 0 ——— 5 |
| ALK1000 | 1980x1850x185 | King | Performance & Longevity | 0 ——— 5 |
| ALKL1000 | 2030x1850x185 | King, Long | | 0 ——— 5 |
| - | Customise | To suit any bed platform | Mobility & Function | 0 ——— 5 |
| Cover | | Warranty | | Pressure Care Rating |
| Premiflex Ultra | | 5 Year Foam / 4 Year Cover 5 Year Air Cell | | |
| Therapeutic Weight Loading | | | Applications | |
| 300kg | | | » Hospital Wards » Aged Care » Palliative Care » Homecare | |

FOAM CORE FEATURES



PREMIUM FIRM FOUNDATION LAYER & HINGED STRENGTHENED SIDES

- » Improves patient safety and encourages central patient positioning
- » Enables ease of primary patient care & makes patient transfers easier and safer
- » Unique hinge profile sides reduce foam fatigue and allows mattress to easily conform to varied bed positions
- » Provides protection against 'bottoming-out' during transfer, repositioning and whilst in the Inclined/Fowler position
- » Provides exceptional comfort, support for repositioning and patient care
- » Provides protection to air system from bed base



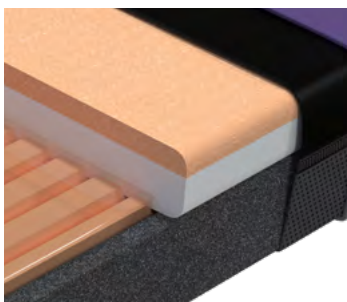
SUPPORT / ANTI-SHEAR RESERVOIR

- » Allows displacement of air from within sacral region to redistribute pressure posterior of the knee
- » The knee pit or popliteal is typically an area of the body that is not in contact with the support surface
- » Accommodates change in user weight distribution over a variety of postural positions



SUPER SHEAR INNER COVER

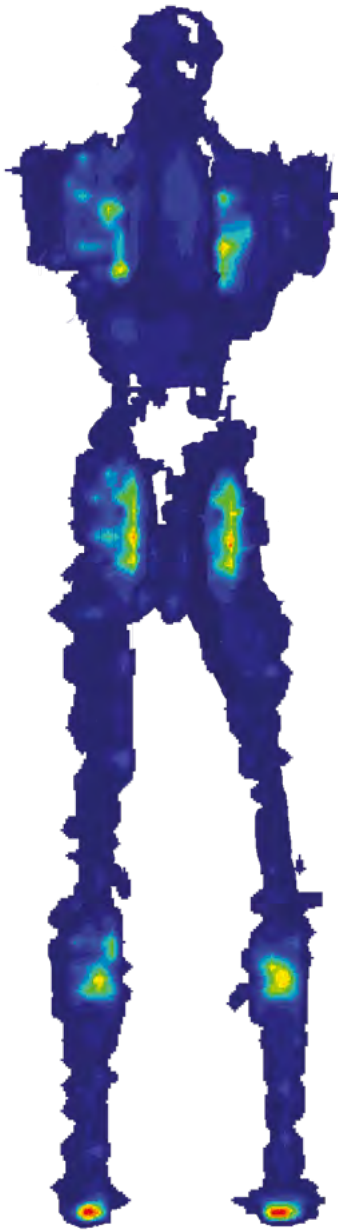
- » Low friction, Anti-Shearing Inner cover compartmentalised to segregate the modular regions of the Alaise in turn delivering a series of shear reduction levels
- » Dramatically reduces shearing forces at the patient interface
- » Fine stretch Lycra based material is wrinkle free and conforms to varied bed positions
- » Provides additional protection to the mattress core



AIROFORM RESPONSE IMMERSION INTERFACE LAYERS

- » High open-cell elasticity for temperate stability and to maximise functionality and patient mobility
- » Maximises Patient contact with Support Surfaces Providing Pressure Redistribution
- » Alleviates localised pressure points
- » Anti-microbial treatment applied to foam maximises longevity and core Micro-Climate
- » Conforms to EPUAP, NPUAP & PPIIA Guidelines for quality and comfort
- » Firmness: Unique combination of Soft & Medium

CLINICAL PRESSURE MAPPING



TEKSCAN PRESSURE MEASUREMENT

| | |
|-------------------|------------------------|
| System | 7.20C |
| Rows | 104 |
| Sensel Area | 2.89008cm ² |
| Micro Second | 0 |
| Sensor Type | 5400D |
| Cols | 34 |
| Seconds per Frame | 0.010319 |
| Units | mmHg |

PRESSURE MAPPING PARAMETERS

| | |
|------------------------------|--|
| Bed Surface | Alrick, 2001WMKII Series Bed |
| Relative Humidity | 51% |
| Ambient Temperature | 21°C |
| Height | 178cm |
| Alrick, 2001WMKII Series Bed | 81kg, RESNA/NPIAP 50th percentile male mannequin |
| Duration | Pressure Mapping was captured after 6 hours of subject laying upon support surface |

HIGH RISK

SOVEREIGN PRESSURE CARE MATTRESSES

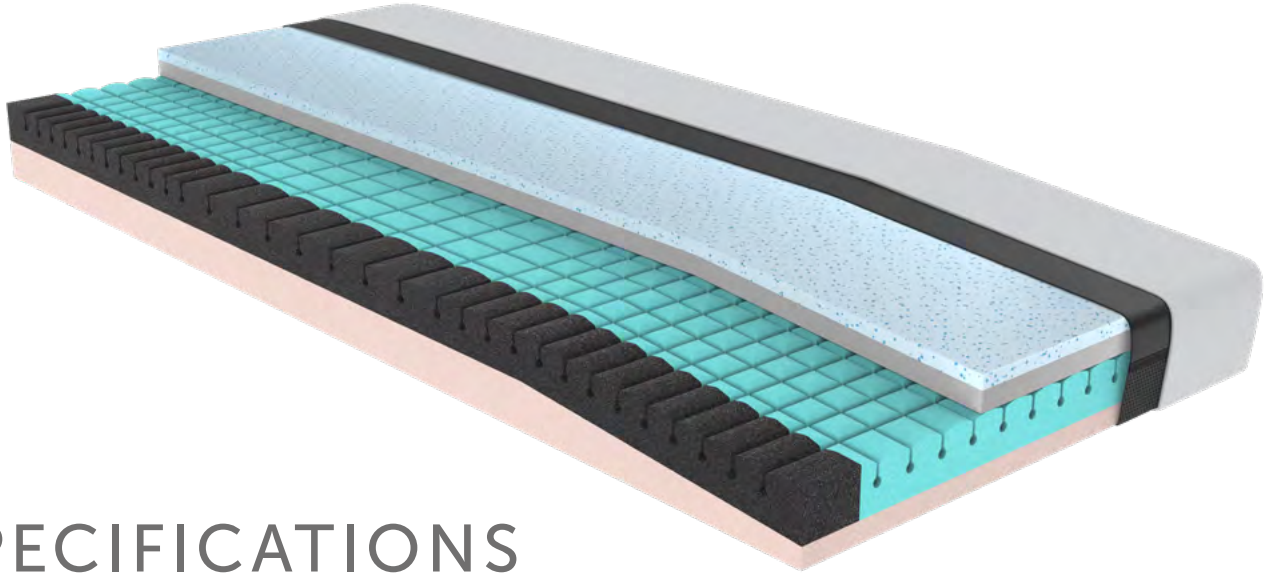
The Sovereign premium high risk static foam mattress range designed by Forté Healthcare using synergistic combinations of market leading technologies deliver the ultimate blend of longevity, patient care and comfort. Forté Healthcare has designed the Sovereign range specifically to provide an exceptional level of support for repositioning and transfers, as well as micro-climate control. Wide therapeutic weight range makes our mattresses suitable for almost any bed platform.



SOVEREIGN S7

Game Changing Foam Innovation

The Sovereign S7 is the culmination of years of development and clinical feedback, resulting in the most-advanced foam surface for the combination of support, care, comfort and longevity. Utilising foam technology exclusive to Forté Healthcare and manufactured specifically for users seeking a higher care surface, the S7 is an adaptive mattress designed to meet individual requirements.



SPECIFICATIONS

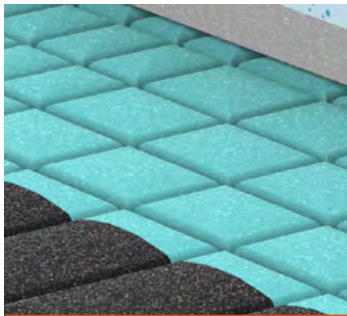
| Product Code with Homecare Cover | Product Code with Contenance Cover | Dimensions (L x W x D mm) | Size | Product Ratings | |
|---|------------------------------------|--|--------------------------|--|----------------------|
| S7S1000QC | S7S1000PU | 1980x880x190 | Single | Shear & Friction | 0 ————— 5 |
| S7SL1000QC | S7SL1000PU | 2030x880x190 | Single, Long | | 0 ————— 5 |
| S7KS1000QC | S7KS1000PU | 1980x1050x190 | King Single | Repositioning | 0 ————— 5 |
| S7KSL1000QC | S7KSL1000PU | 2030x1050x190 | King Single, Long | | 0 ————— 5 |
| S7EW1000QC | S7EW1000PU | 1980x1150x190 | Extra-Wide | Infection Control [^] | 0 ————— 5 |
| S7EWL1000QC | S7EWL1000PU | 2030x1150x190 | Extra-Wide, Long | | 0 ————— 5 |
| S7D1000QC | S7D1000PU | 1980x1350x190 | Double | Firmness | 0 ————— 5 |
| S7DL1000QC | S7DL1000PU | 2030x1350x190 | Double, Long | | 0 ————— 5 |
| S7Q1000QC | S7Q1000PU | 1980x1530x190 | Queen | Moisture & Microclimate | 0 ————— 5 |
| S7QL1000QC | S7QL1000PU | 2030x1530x190 | Queen, Long | | 0 ————— 5 |
| S7K1000QC | S7K1000PU | 1980x1850x190 | King | Performance & Longevity | 0 ————— 5 |
| S7KL1000QC | S7KL1000PU | 2030x1850x190 | King, Long | | 0 ————— 5 |
| - | | Customise | To suit any bed platform | Mobility & Function | 0 ————— 5 |
| Cover | | Warranty | | | Pressure Care Rating |
| Premiflex Ultra (Contenance) or Luxury Homecare | | Premiflex Ultra 5 Year Foam Core 4 Year Cover Luxury Homecare 2 years | | | |
| Therapeutic Weight Range | | | | Applications | |
| 30 - 250kg* | | | | » Hospital Wards » Aged Care » Palliative Care » Homecare** | |

*For 2 user mattresses (Queen/King) Therapeutic Weight Range is per user

** Due to infection control standards Luxury Homecare can only be used in Homecare

[^] Premiflex Cover Only

FOAM CORE FEATURES



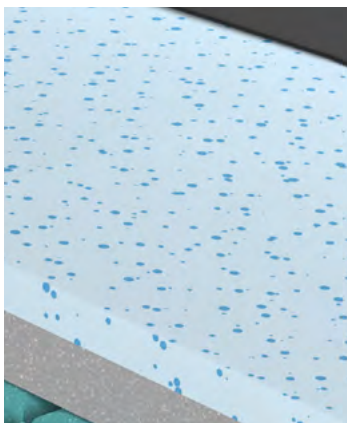
ADVANCED PRESSURE REDISTRIBUTION

- » Airoform memory foam gel upper conforms naturally to the shape of the body for optimal contact with the surface and equalized pressure redistribution
- » Individual cells within the adaptive Ventraflow® layer contour to the body profile for deep immersion and envelopment of bony high-risk areas.
- » Cells are zoned to ensure support is posturally aligned. Pressure redistribution is maintained relative to the applied weight in the area.



BREATHABILITY AND IMPROVED MICRO-CLIMATE

- » Next generation Ventraflow® provides unrestricted Air Movement which takes heat and moisture away from pressure areas with the unique Air Channel System.
- » Full Side-to-Side and End-to-End air flow channels balances internal mattress conditions with external temperature and humidity, minimising localised hotspots.



REDUCED FRICTION/SHEAR

- » When the skin sticks to a surface during body movement, it creates a force that stretches the tissues beneath the surface, known as 'shear'. As a major contributor to pressure injuries, mattress selection with insufficient shear protection will impact skin integrity.

Shearing is addressed with the following features;

Multiple Anti-Shear Layers – transfers shear forces deep within the mattress

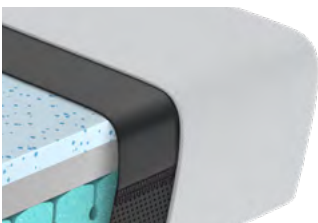
Compartmentalised Design – keeps immersion layer aligned with the user throughout full bed movements. Lycra, high-stretch breathable SuperShear® inner cover allows controlled movement between mattress layers.

Dual Immersion Design - Ventraflow® engineered foam technology provides dynamic bi-directional absorption of micro-movements.



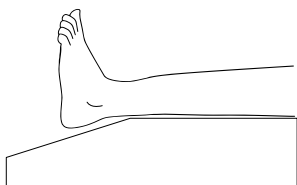
SAFETY AND FALLS PREVENTION

- » Proprietary technology enables integrates high-support foam within the engineered Ventraflow® system, creating high support edges for safe transfers and repositioning without compromising breathability.
- » Inbuilt strengthened sides provide structural support during transfers.



MOBILITY, INDEPENDENCE & EASE OF REPOSITIONING

- » Ultra-high rebound foam technology makes it easier to roll and reposition.
- » The unique response technology within the anatomical Ventraflow® system and Airoform® layers ensures high reactivity to movement, resulting in immediate response to posture changes without compromising on pressure care.



HEEL SLOPE

- » A subtle integrated heelslope at 5 degrees gently transfers pressure away from the critical heel region.

SOVEREIGN S6

High Care Support Pressure Care Mattress

The Flagship Forté static foam mattress delivering the highest care possible without incorporating air or alternating air technology. This is achieved through unique features such as Airoform Gel Immersion Interface Foam, high density, responsive secondary Immersion layer that has zoned & modulated regions and a full breathable Anti-Shearing Inner Cover. The Sovereign S6 mattress is used widely as a solution for long term care in facilities and the home environment, delivering excellent pressure care for patients up to high risk of pressure injury.



SPECIFICATIONS

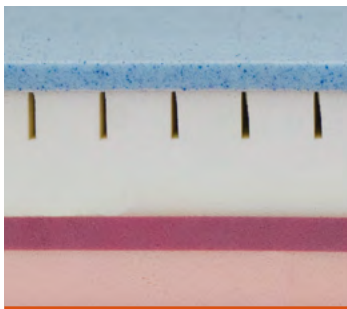
| Code | Dimensions (L x W x D mm) | Size | Product Ratings | |
|---------------------------------|------------------------------|-----------------------------|---|-----------------------------|
| S6S1000 | 1980x880x160 | Single | Shear & Friction | 0 ————— 5 |
| S6SL1000 | 2030x880x160 | Single, Long | | 0 ————— 5 |
| S6KS1000 | 1980x1050x160 | King Single | Repositioning | 0 ————— 5 |
| S6KSL1000 | 2030x1050x160 | King Single, Long | | 0 ————— 5 |
| S6EW1000 | 1980x1150x160 | Extra-Wide | Infection Control | 0 ————— 5 |
| S6EWL1000 | 2030x1150x160 | Extra-Wide, Long | | 0 ————— 5 |
| S6D1000 | 1980x1350x160 | Double | Firmness | 0 ————— 5 |
| S6DL1000 | 2030x1350x160 | Double, Long | | 0 ————— 5 |
| S6Q1000 | 1980x1530x160 | Queen | Moisture & Microclimate | 0 ————— 5 |
| S6QL1000 | 2030x1530x160 | Queen, Long | | 0 ————— 5 |
| S6K1000 | 1980x1850x160 | King | Performance & Longevity | 0 ————— 5 |
| S6KL1000 | 2030x1850x160 | King, Long | | 0 ————— 5 |
| - | Customise | To suit any bed platform | Mobility & Function | 0 ————— 5 |
| Cover | | Warranty | | Pressure Care Rating |
| Premiflex Ultra | | 5 Year Foam 4 Year Cover | | |
| Therapeutic Weight Range | | | Applications | |
| 30 - 250kg | | | » Hospital Wards » Aged Care » Palliative Care » Homecare | |

FOAM CORE FEATURES



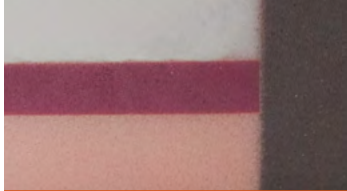
AIROFORM GEL IMMERSION INTERFACE LAYER

- » Visco-elastic cell structure provides low-shear surface and effective Immersion
- » Gel particles work to absorb excessive heat & regulate patient temperature
- » Provides enhanced breathability minimising risk of excessive patient heat
- » Provides exceptional comfort
- » Firmness: Extra-Soft



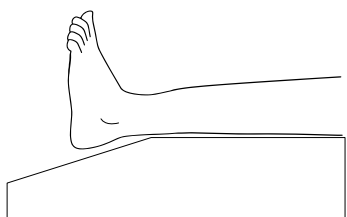
HIGH-PERFORMANCE, 5 ZONED IMMERSION REGION

- » 4-Zones of lateral and longitudinal castellations within the immersion region cradle the patient and conform to bony prominences
- » Dual zoned depth provides postural support
- » Open-cell foams freely distribute air and enhance circulation
- » Provides reduction of shearing forces at the patient interface
- » Ultra-High Performance Foam instantly responds to patient movement & repositioning for ease of primary care



PREMIUM FIRM FOUNDATION LAYERS

- » Provides protection against 'bottoming-out' during transfer, repositioning & whilst in the inclined/fowler position
- » Provides exceptional comfort, support for repositioning and patient care



SLOPED HEEL PRESSURE TRANSFER ZONE

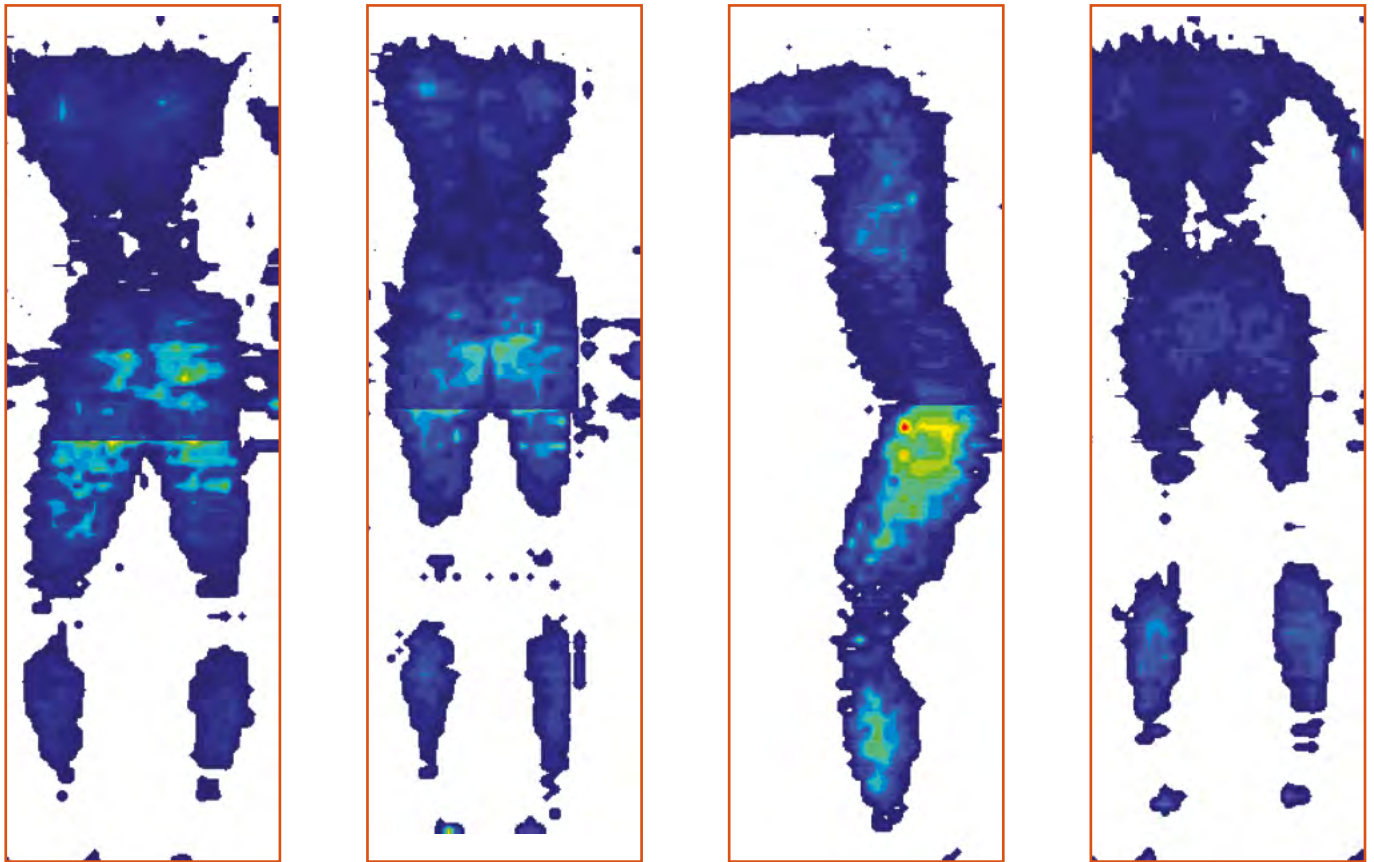
- » Enhances pressure relief & protection for critical at-risk heel region
- » Offloads pressure from the patients heels and transfers it to calf area
- » Unobtrusive, does not require any adjustment



HINGED STRENGTHENED SIDES

- » Increase lateral stability of support surface
- » Improves patient safety and encourages central patient positioning
- » Make patient transfers easier
- » Unique hinge profile reduces foam fatigue and allows the mattress to easily conform to varied bed positions
- » Enables ease of primary patient care

CLINICAL PRESSURE MAPPING



FOWLER - Elevated Legs

FOWLER

LATERAL RECUMBENT

SUPINE



TEKSCAN PRESSURE MEASUREMENT

| | | | |
|--------------------|-----------|-------------------------------------|-----------------|
| System: 7.20C | Rows: 104 | Sensel Area: 2.89008cm ² | Micro Second: 0 |
| Sensor Type: 5400D | Cols: 34 | Seconds per Frame: 0.010319 | Units: mmHg |

PRESSURE MAPPING PARAMETERS

| | | |
|--|---------------------|---------------------------|
| Bed Surface: Alrick, 5 Function Electric Hospital Bed | Subject: 98kg, Male | Height: 188cm |
| Duration: Pressure Mapping was captured after 6 hours of subject laying upon support surface | | Ambient Temperature: 21°C |

MEDIUM RISK

HEMOCARE ICON LUXURY PRESSURE CARE MATTRESS RANGE

The Forté Homecare ICON Mattress provides the perfect culmination of special care, unparalleled comfort and longevity for low-medium risk users.

The tried and trusted design of the Forté ICON offers excellent pressure injury prevention, safety, mobility and independence without compromise on exceptional user comfort, satisfaction and improved rest.

The ICON is stocked in Soft, Medium and Firm configurations and in Single, Single Long, King Single, King Single Long, Double, Queen and Split Queen sizing. This ensures the ICON is a perfect ready-made solution.

Australian made by Forté Healthcare in Armidale, the ICON range is synonymous with quality, performance, longevity and functionality and is trusted by leading Hospitals and healthcare professionals to deliver clinical results and positive outcomes.



ICON MAXX 500kg

Supporting patients up to 500kg the Forté Icon Maxx Medium Risk Bariatric Pressure Care support surface is a trusted bariatric care solution delivering outstanding performance.

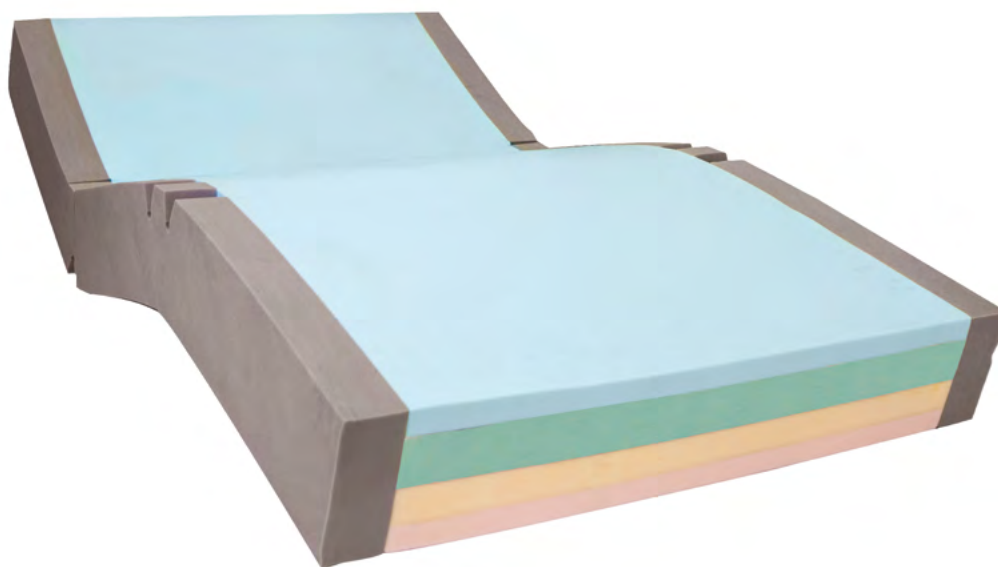


SPECIFICATIONS

| Code | Dimensions (L x W x D mm) | Size | Product Ratings | |
|--|------------------------------|-----------------------------|---|-------------|
| IM5S1000 | 1980x880x200 | Single | Shear & Friction | 0 —●— 5 |
| IM5SL1000 | 2030x880x200 | Single, Long | | |
| IM5KS1000 | 1980x1050x200 | King Single | Repositioning | 0 —●— 5 |
| IM5KSL1000 | 2030x1050x200 | King Single, Long | | |
| IM5EW1000 | 1980x1150x200 | Extra-Wide | Infection Control | 0 —●— 5 |
| IM5EWL1000 | 2030x1150x200 | Extra-Wide, Long | | |
| IM5D1000 | 1980x1350x200 | Double | Firmness | 0 —●— 5 |
| IM5DL1000 | 2030x1350x200 | Double, Long | | |
| IM5Q1000 | 1980x1530x200 | Queen | Moisture & Microclimate | 0 —●— 5 |
| IM5QL1000 | 2030x1530x200 | Queen, Long | | |
| IM5K1000 | 1980x1850x200 | King | Performance & Longevity | 0 —●— 5 |
| IM5KL1000 | 2030x1850x200 | King, Long | | |
| - | Customise | To suit any bed platform | Mobility & Function | 0 —●— 5 |
| Cover | | Warranty | | |
| Advantiflex Classic with Extra Heavy-Duty Base | | 5 Year Foam 2 Year Cover | Pressure Care Rating | MEDIUM RISK |
| Therapeutic Weight Range | | | Applications | |
| 120 - 500kg | | | » Hospital Wards » Aged Care » Homecare | |

ICON MAXX 350kg

The Icon Maxx 350kg mattress is a 4-layered static foam bariatric mattress with firm hinged strengthened sides, triple segmented base and Advantiflex Classic pressure care cover. Suited to clients between 90-350kg, it is a medium risk high performance mattress.



SPECIFICATIONS

| Code | Dimensions (L x W x D mm) | Size | Product Ratings | |
|--|------------------------------|-----------------------------|---|-------------------------|
| IM1S1000 | 1980x880x180 | Single | Shear & Friction | 0 ———●————— 5 |
| IM1SL1000 | 2030x880x180 | Single, Long | | |
| IM1KS1000 | 1980x1050x180 | King Single | Repositioning | 0 ————— 5 |
| IM1KSL1000 | 2030x1050x180 | King Single, Long | | |
| IM1EW1000 | 1980x1150x180 | Extra-Wide | Infection Control | 0 ——— ——— ——— ——— ——— 5 |
| IM1EWL1000 | 2030x1150x180 | Extra-Wide, Long | | |
| IM1D1000 | 1980x1350x180 | Double | Firmness | 0 ——— ——— ——— ——— ——— 5 |
| IM1DL1000 | 2030x1350x180 | Double, Long | | |
| IM1Q1000 | 1980x1530x180 | Queen | Moisture & Microclimate | 0 ——— ——— ——— ——— ——— 5 |
| IM1QL1000 | 2030x1530x180 | Queen, Long | | |
| IM1K1000 | 1980x1850x180 | King | Performance & Longevity | 0 ——— ——— ——— ——— ——— 5 |
| IM1KL1000 | 2030x1850x180 | King, Long | | |
| - | Customise | To suit any bed platform | Mobility & Function | 0 ——— ——— ——— ——— ——— 5 |
| Cover | | Warranty | | |
| Advantiflex Classic with Extra Heavy-Duty Base | | 5 Year Foam 2 Year Cover | Pressure Care Rating | MEDIUM RISK |
| Therapeutic Weight Range | | | Applications | |
| 90 - 350kg | | | » Hospital Wards » Aged Care » Homecare | |

HOMECARE ICON - SOFT



SPECIFICATIONS

| | Code | Dimensions (L x W x D mm) | Size | Product Ratings | |
|--------------------------|--------------|------------------------------|--------------------------|-------------------------|-------------------|
| 15cm Thickness | ICONS15S | 1900x900x150 | Short Single | Shear & Friction | 0 ———●————— 5 |
| | ICONSL15S | 2030x900x150 | Long Single | | |
| | ICONKSL15S | 2030x1070x150 | Long King Single | Repositioning | 0 ———●————— 5 |
| | ICONDL15S | 2030x1350x150 | Long Double | | |
| | ICONQL15S | 2030x1520x150 | Long Queen | Infection Control | 0 ———●————— 5 |
| ICONSQ15S | 2030x760x150 | Split Queen | | | |
| 20cm Thickness | ICONS20S | 1900x900x200 | Short Single | Firmness | 0 ———●————— 5 |
| | ICONSL20S | 2030x900x200 | Long Single | | |
| | ICONKSL20S | 2030x1070x200 | Long King Single | Moisture & Microclimate | 0 ———●————— 5 |
| | ICONDL20S | 2030x1350x200 | Long Double | | |
| | ICONQL20S | 2030x1520x200 | Long Queen | Performance & Longevity | 0 ———●————— 5 |
| | ICONSQ20S | 2030x760x200 | Split Queen | | |
| | - | Customise | To suit any bed platform | Mobility & Function | 0 ———●————— 5 |
| Cover | | Warranty | | Pressure Care Rating | LOW - MEDIUM RISK |
| Luxury Quilted Homecare | | 5 Year Foam 2 Year Cover | | | |
| Therapeutic Weight Range | | | | Applications | |
| 15cm | 28- 130kg | 20cm | 28 - 180kg | » Homecare | |

HEMOCARE ICON - MEDIUM



SPECIFICATIONS

| | Code | Dimensions (L x W x D mm) | Size | Product Ratings | |
|--------------------------|--------------|------------------------------|------------------|-------------------------|-------------------|
| 15cm Thickness | ICONS15M | 1900x900x150 | Short Single | Shear & Friction | 0 ———●————— 5 |
| | ICONSL15M | 2030x900x150 | Long Single | | |
| | ICONKSL15M | 2030x1070x150 | Long King Single | Repositioning | 0 ———●————— 5 |
| | ICONDL15M | 2030x1350x150 | Long Double | | |
| | ICONQL15M | 2030x1520x150 | Long Queen | Infection Control | 0 ———●————— 5 |
| ICONSQ15M | 2030x760x150 | Split Queen | | | |
| 20cm Thickness | ICONS20M | 1900x900x200 | Short Single | Firmness | 0 ———●————— 5 |
| | ICONSL20M | 2030x900x200 | Long Single | | |
| | ICONKSL20M | 2030x1070x200 | Long King Single | Moisture & Microclimate | 0 ———●————— 5 |
| | ICONDL20M | 2030x1350x200 | Long Double | | |
| | ICONQL20M | 2030x1520x200 | Long Queen | Performance & Longevity | 0 ———●————— 5 |
| | ICONSQ20M | 2030x760x200 | Split Queen | | |
| - | Customise | To suit any bed platform | | Mobility & Function | 0 ———●————— 5 |
| Cover | | Warranty | | | |
| Luxury Quilted Homecare | | 5 Year Foam 2 Year Cover | | Pressure Care Rating | LOW - MEDIUM RISK |
| Therapeutic Weight Range | | | | | |
| 15cm | 40 - 165kg | 20cm | 40 - 200kg | » Homecare | |

HOME CARE ICON - FIRM



SPECIFICATIONS

| | Code | Dimensions (L x W x D mm) | Size | Product Ratings | | | |
|-------------------------|--------------|------------------------------|-------------------------|-------------------------|--------------------------|----------------------|--------------|
| 15cm Thickness | ICONS15F | 1900x900x150 | Short Single | Shear & Friction | 0 ———●———— 5 | | |
| | ICONSL15F | 2030x900x150 | Long Single | | Repositioning | 0 ———●———— 5 | |
| | ICONKSL15F | 2030x1070x150 | Long King Single | Infection Control | | 0 ———●———— 5 | |
| | ICONDL15F | 2030x1350x150 | Long Double | | | Firmness | 0 ———●———— 5 |
| | ICONQL15F | 2030x1520x150 | Long Queen | Moisture & Microclimate | 0 ———●———— 5 | | |
| ICONSQ15F | 2030x760x150 | Split Queen | Performance & Longevity | | 0 ———●———— 5 | | |
| 20cm Thickness | ICONS20F | 1900x900x200 | | Short Single | Mobility & Function | 0 ———●———— 5 | |
| | ICONSL20F | 2030x900x200 | | Long Single | | Pressure Care Rating | 0 ———●———— 5 |
| | ICONKSL20F | 2030x1070x200 | | Long King Single | Therapeutic Weight Range | | Applications |
| | ICONDL20F | 2030x1350x200 | | Long Double | | 15cm | |
| | ICONQL20F | 2030x1520x200 | Long Queen | 20cm | | | |
| ICONSQ20F | 2030x760x200 | Split Queen | 55 - 300kg | » Homecare | | | |
| - | Customise | To suit any bed platform | | LOW - MEDIUM RISK | | | |
| Cover | | Warranty | | | | | |
| Luxury Quilted Homecare | | 5 Year Foam 2 Year Cover | | | | | |

FOAM CORE FEATURES



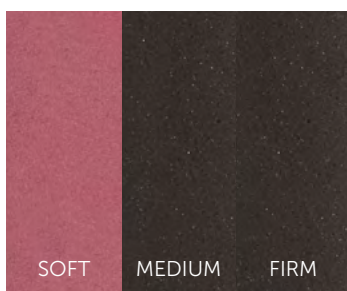
AIROFORM MEMORY BREATHE IMMERSION INTERFACE LAYER

- » High Temperature Stability to deliver consistent immersion, performance and comfort
- » Maximises Patient contact with Support Surfaces Providing Pressure
- » Redistribution
- » Alleviates localised pressure points
- » Depth calibrated to maximise functionality and patient mobility
- » Unique Airoform Breathe ventilation system minimises heat entrapment and enhances core circulation providing a cooler sleep surface
- » Visco-elastic/Memory Foam cell structure provides low-shear surface
- » Firmness: Available Soft, Medium, Firm



DELUXE GRADE MID-LAYER

- » Open cell high quality foam
- » Provides exceptional comfort and postural support for repositioning and patient care
- » Available Soft, Medium, Firm



PREMIUM FIRM FOUNDATION LAYER

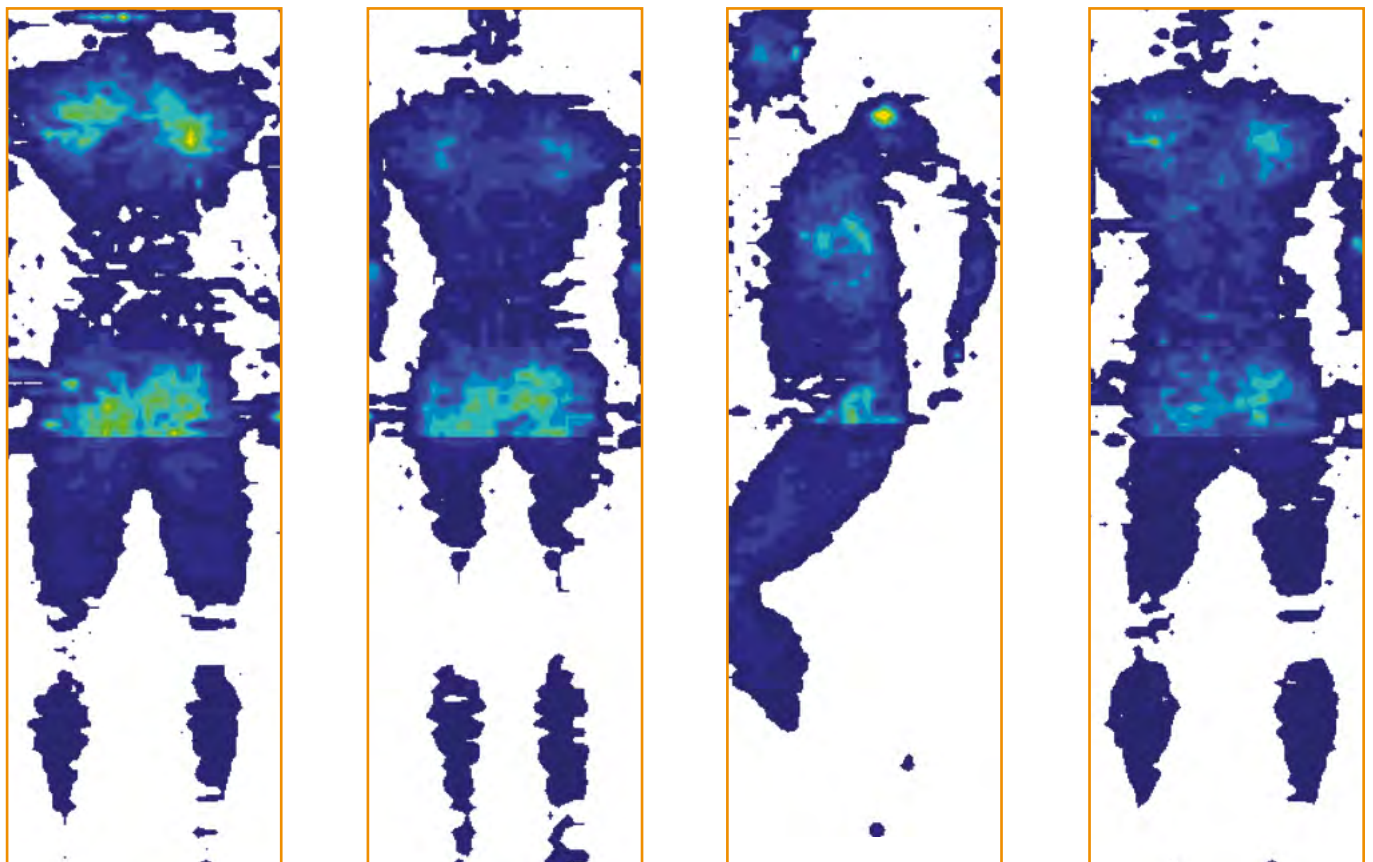
- » Provides protection against 'bottoming-out' during transfer, repositioning and whilst in the inclined/fowler position
- » Provides exceptional comfort, support for repositioning and patient care
- » Available Soft, Medium, Firm



HINGED STRENGTHENED SIDES

- » Increase lateral stability of support surface
- » Improves patient safety and encourages central patient positioning
- » Make patient transfers easier
- » Unique hinge profile reduces foam fatigue and allows the mattress to easily conform to varied bed positions
- » Enables ease of primary patient care

CLINICAL PRESSURE MAPPING



FOWLER - Elevated Legs

FOWLER

LATERAL RECUMBENT

SUPINE - Elevated Legs



TEKSCAN PRESSURE MEASUREMENT

| | | | |
|--------------------|-----------|-------------------------------------|-----------------|
| System: 7.20C | Rows: 104 | Sensel Area: 2.89008cm ² | Micro Second: 0 |
| Sensor Type: 5400D | Cols: 34 | Seconds per Frame: 0.010319 | Units: mmHg |

PRESSURE MAPPING PARAMETERS

| | | |
|--|---------------------|---------------------------|
| Bed Surface: Alrick, 5 Function Electric Hospital Bed | Subject: 98kg, Male | Height: 188cm |
| Duration: Pressure Mapping was captured after 6 hours of subject laying upon support surface | | Ambient Temperature: 21°C |

MATTRESS COVERS

LATEST DESIGN & TECHNOLOGY

Custom made to your requirements, Forté Medical covers utilise premium quality raw materials sourced from leading manufactures such as Sioen Industries (Belgium) and Dartex Coatings (UK).

We understand the complex interaction between the medical cover, the support surface and the patient and ensure the properties of the medical covers we manufacture perfectly compliment the support surface and exceed patient care requirements.

Forté medical covers address medical requirements such as interface pressure relief, shear reduction, microclimate management, durability, and infection control.

Our state-of the art manufacturing facility in Armidale, New England incorporates high frequency welding capability, advanced sewing machinery and digital branding capability.

We specialise in custom made requirements, from 1 cover to 1000, we have the expertise to fulfill your requirements competitively and on-time.



PREMIFLEX

PREMIFLEX ULTRA PRESSURE CARE COVER



OUR PREMIUM COVER

The Forté Premiflex Ultra Breathe Covers Range builds on the attributes of the Premiflex range and delivers superior infection control and overall mattress longevity. Acute care environments often result in prolonged exposure to high humidity and moisture as result of reduced mattress rest periods and higher utilisation. Premiflex Ultra Breathe technology increases the ability of the cover to allow moisture to escape and consequently reducing condensation and formation of contaminants within the cover. Benefits of this include less risk of mould developing and greater foam performance.

PREMIFLEX PFPU1100 PRESSURE CARE POLYURETHANE UPPER MATERIAL

» 4-Way Stretch, Vapour Permeable - Purple

DOUBLE COATED PREMIFLEX PFPU1200 POLYURETHANE BASE MATERIAL

» Robust, Vapour Permeable, Deep Grey

FULL VAPOUR PERMEABILITY

INFECTION CONTROL & COMPLIANCE

» 10,000ppm chlorine based cleaning agent concentration suitability, Inherent Anti-Microbial Protection, Fire retardant, High frequency sealed and welded seams

CONSTRUCTION

» High frequency welded zipper, Zipper waterfall protection flap, High frequency sealed and welded seams.

ADVANTIFLEX

ADVANTIFLEX CLASSIC PRESSURE CARE COVER



Belgium made polyurethane coated upper and heavy duty PVC Base ensures that Forté Advantiflex Covers deliver consistent care, comfort and durability. Utilising premium quality medical grade fabrics, Forté Combination Covers are a tried and proven medical grade Pressure Redistribution Cover.

ADVANTIFLEX PU1100 PRESSURE CARE POLYURETHANE UPPER MATERIAL

» 4-Way Stretch, Vapour Permeable - Blue

HEAVY DUTY PVC BASE MATERIAL

» Durable, 100% Waterproof - Grey

INFECTION CONTROL & COMPLIANCE

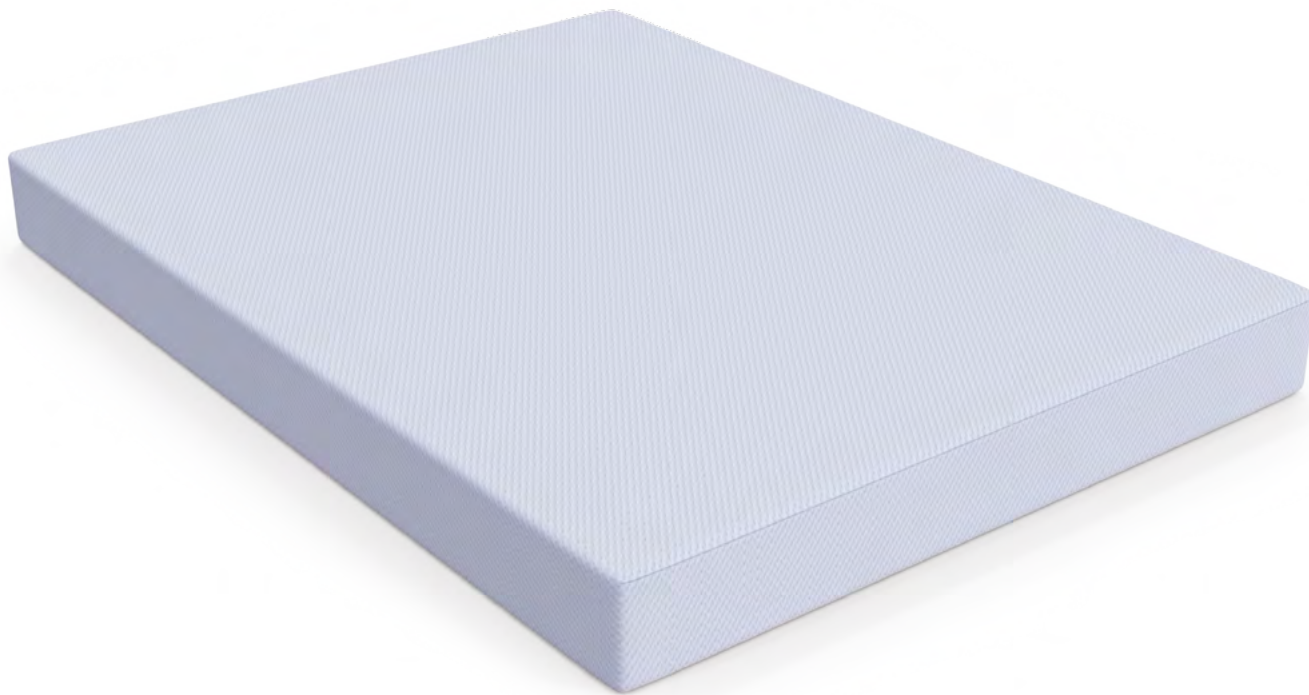
» Inherent Anti-Microbial Protection, Fire retardant, High frequency sealed and welded seams

CONSTRUCTION

» High frequency welded zipper, Zipper waterfall protection flap, High frequency sealed and welded seams.

HOME CARE

LUXURY QUILTED PRESSURE CARE COVER



Open weave, breathable pressure care cover which looks and feels comparable to a luxury conventional residential mattress. 4-Way Stretch, anti-shearing, conforming open weave fabric compliments the multi-tiered foam structure offering pressure redistribution, immersion, and envelopment.

High breathability to aid in microclimate control, encourages air circulation which promotes health micro-climate conditions at the skin interface and provides cooler comfort important for hot sleepers.

LUXURY QUILTED QC1000 MATERIAL

- » Excellent breathability - open weave structure allows cooler sleep and reduces heat related sweating and discomfort
- » 4-Way Stretch preventing hammocking and stretching beneath bony regions
- » Anatomically Contouring - compliments immersion, envelopment and pressure distribution within mattress
- » Anti-Shearing and Anti-Friction for protection of vulnerable skin
- » High Quality, Luxury Comfort
- » Standard Colour: Textured White

EXCELLENT STRETCH

- » Reduces 'Hammocking' and material tension, Lowers interface pressure

BREATHABLE

- » Encourages air circulation which promotes healthy micro-climate conditions at the skin interface, ensuring excessive sweating is wicked away
- » Provides comfort especially to 'hot sleepers'
- » Allows moisture and humidity present within the foams to easily escape for improved foam performance and longevity

CLEANING & CARE

- » Removable
- » Spot Clean

COMPLIANCE

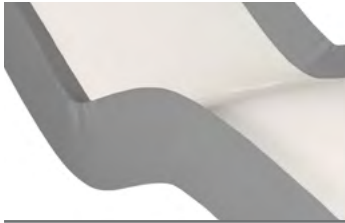
- » Not suitable for incontinent patients
- » Material manufactured in Australia
- » High Quality materials and construction

CONSTRUCTION

- » 180° / Two-Sided Integrated Zipper - Allows easy cover removal
- » High-Quality Sewn Seams
- » Robust and durable



CUSTOM OPTIONS



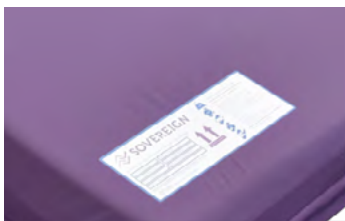
CONCAVE PROTECTION SIDES

- » Provides gentle protection for patients inclined to turn out of bed
- » Quality foam conforms to patient transfer and primary care whilst maintaining its profile
- » Unique hinge points allow mattress to easily conform to varied bed positions.



SUPER SHEAR INNER COVER

- » Low friction, Anti-Shearing Inner cover compartmentalised to segregate the modular regions of the Zephair in turn delivering a series of shear reduction levels
- » Dramatically reduces shearing forces at the patient interface
- » Fine stretch Lycra based material is wrinkle free and conforming to varied bed positions
- » Provides additional protection to the foam core
- » Included on the Zephair Mattress



CUSTOM LABELLING

- » Ward/Location Printing for Asset Management
- » Uniform Audit Data Records
- » Assists with matching mattresses with the correct sized beds fully digital, high flexibility and definition allowing print of smaller fonts.



ASSURE EVACUATION SYSTEM

- » All Cross-Patient & Pull Straps Fully contained in pockets Integrated within the foam core to prevent straps from becoming entangled or at risk of infection whilst remaining easy to access.
- » Includes Foam Core Modification to allow foams to encapsulate patient, and reduces co-efficient of friction forces during evacuation
- » Low Resistance base sheet to allow the mattress to slide easily
- » Integrated Carry Handles
- » Every component meets all infection control standards - all seams welded, all exposed components 100% wipe-clean



CUSTOMISATION

- » Every patient is unique and no two care environments are necessarily the same.
- » All Forté Healthcare products are manufactured and designed in the state of the art manufacturing facility in Armidale, Australia.
- » Common sizes and models are held in stock, the rest is made to order. This means Forté can customise any product to suit your specific needs.
- » Any standard or custom product can be made to suit any requirement and bed platform – from neonatal and paediatric needs through to king size luxury domestic beds, truncated stretcher mattress or complex acute care bed systems.



**GLOBAL TECHNOLOGY
AUSTRALIAN MADE**

**All mattresses are designed
and manufactured in
Armidale NSW, AUSTRALIA
in accordance with all
Australian manufacturing
and clinical standards.**



back to **sleep**[®]
mattress & pillow specialists

1300 848 077

www.backtosleep.com.au

info@backtosleep.com.au