

INVISA-BEAM® Dual Beam Bed Monitor



SUITABLE FOR

- Hospitals
- Aged Care Facilities
- Nursing Homes
- High Care

FEATURES

- Aids for falls prevention from beds.
- Alerts the nurse at the earliest stage, when the patient attempts to leave the bed
- Patient security—can help prevent unauthorised entry to the bed
- Alerts the staff of any unauthorised entry to the bed
- Monitors both sides of the bed with precise invisible beams
- Total Wireless Operation
- Bed free of equipment and cables
- Hands-free—a bonus for infection control
- Monitor alarm cancels when the nurse enters the field of the bed

- Monitor alarm automatically resets when the nurse leaves the bed
- Activity at the bedside can be recorded — a management tool
- Can be used for lowered beds; also for bariatrics.
- Invisa-beam® uses heavy duty, industrial german sensors. They have been in use for over 10 years without faults.

Code	Product
BEA007216	Dual Beam Monitor w/ Mono & Stereo Plug
BEA007217	Dual Beam Monitor w/ Remote Alarm
BEA007218	Dual Beam Monitor w/ Invisalert

Wall Plate, CPU, Range Extender and powered remote also available.

ENTRY PASS

The Entry Pass is like a master key. It allows the nurse free access to the patient without worrying about switches.

When the nurse attends to the patient in response to an alarm:



- The Entry Pass cancels the alarm
- The bed monitor alarm automatically resets when the nurse leaves the bed

The Entry Pass may be worn with retractable clip supplied.

Code	Product
BEA007211	Entry pass
BEA007212	5 Card Charger
BEA007213	10 Card Charger

INVISALERT



- INVISALERT cancels the alarm
- The bed monitor automatically resets when the nurse leaves the bed.

FEATURES

- Displays the location of the alarm source — Bed & Room
- Vibrating alarm
- Audible alarm

INVISALERT allows the nurse free access to the patient without worrying about switches.

When the nurse attends to the patient in response to an alarm:

Code	Product
BEA007214	Invisalert Pager
BEA007255	3.7V Rechargeable Battery Pack
BEA007256	Power Supply Charger

MANUAL BACKUP

Two touch pad switches are provided to display the icons for on/off and delay.



DIALABEAM MONITOR for chairs/low level beds

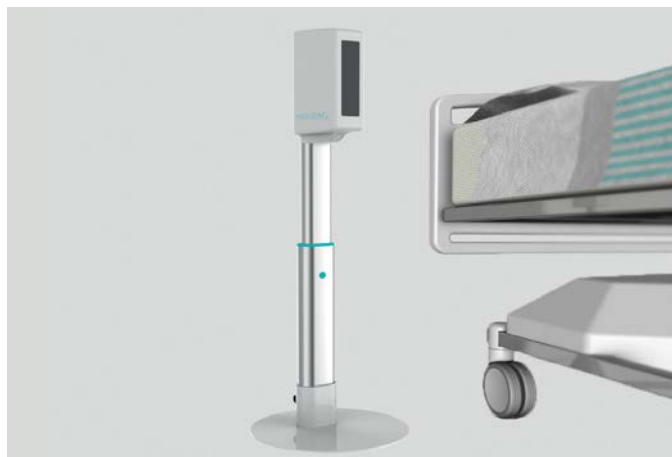
This is a 2 in 1 monitoring system. You can dial for chair monitoring or dial for low level bed monitoring with a simple turn of a knob.

It monitors the width of the chair or the length of the bed. It is also useful for doorways and bathrooms.

It can be operated by power or battery.

The height is adjustable.

Code	Product
BEA007225	Monitor w/ Mono & Stereo Plug
BEA007226	Monitor w/ Remote Alarm
BEA007227	Monitor w/ Invisalert



FREE-STANDING MONITOR

Free-Standing Bed Monitor stands at the head of the bed to monitor the side of the bed.

It is power operated.

Battery operation is an optional extra.

The height is adjustable for lowered beds.

Dialabeam is optional.

Code	Product
BEA007220	MPM Bed Monitor w/ Mono & Stereo Plug
BEA007221	MPM Bed Monitor w/ Remote Alarm
BEA007222	MPM Bed Monitor w/ Invisalert



BED MONITOR

Standard Bed Monitor is attached to the bed head to monitor the side of the bed.

It monitors the length of the bed with precise, invisible beams.

It is power operated.

Code	Product
BEA007200	Bed Monitor w/ Mono & Stereo Plug
BEA007201	Bed Monitor w/ Remote Alarm
BEA007202	Bed rail monitor including mono or stereo plug
BEA007203	Bed rail monitor including remote alarm

INVISA-BEAM® is an early warning monitoring device that gives positive detection for falls prevention.

Precise invisible beams continuously monitor the bed/chair. When the patient/resident, at high risk of falling, attempts to leave the bed/chair, an alarm is transmitted to alert the nurse/carer for assistance.